



High Solids Spray Paint - the best you can buy

Würth announces a new high solids enamel spray to give you the highest quality product available today.

- Saves time and therefore saves money – excellent coverage in one coat

Würth Industrial Enamel spray paint is heat resistant beyond what is required in normal working environments.

- Enamel is heat resistant up to 175° C (350° F)
- High Temperature paint up to 700° C (1300° F)

Würth formulas are formulated to ensure they meet and exceed today's and future chemical directives.

- All Würth spray paints meet provincial and government VOC regulation limits

Würth products are formulated with consideration for our environment.

- Higher solids = Less cans required for the job
- Less cans used = Better for the environment
- Standard promotional brands may require up to 3 x 16 oz. cans to equal the coverage that one 20 oz. can of Würth Spray Paint provides

Excellent Hiding Power

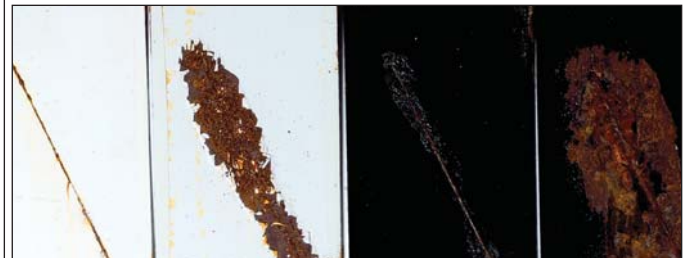
It's easy to see how much better Würth Spray Paint performs – just look at the hiding cards below:



Unpainted Test Card Standard Industrial Würth Spray Paint

Superior Corrosion Resistance

The panels below spent 200 hours in a salt fog cabinet – the harshest environment and perfect for this test:



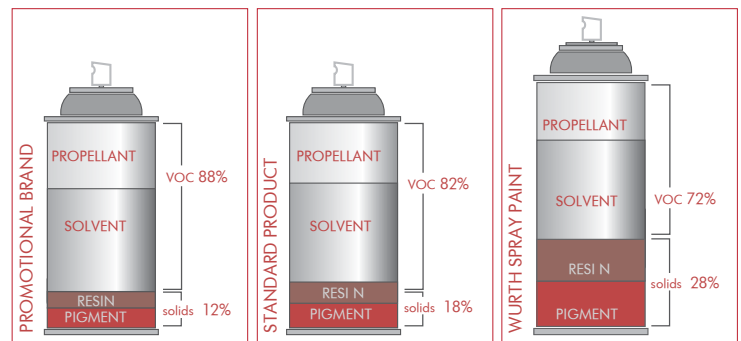
Würth Spray Paint Leading Competitor Würth Spray Paint Leading Leading Competitor

Resistant Against Gasoline

Würth Spray Paint will not be affected by gasoline. The panels below were allowed to dry, dripped with gasoline and then wiped off:



Würth Spray Paint Leading Competitor



Spray paint tips:

- Ensure adequate ventilation at all times
- Wear safety glasses when spraying
- Always shake well, especially higher-solids products, where there is more pigment
- Use a Primer – promotes better adhesion, which aids long-term durability



Spray Paint 20 oz. Aerosol

- 892.187 WURTH ENAMEL BLACK GLOSS
- 892.189 WURTH ENAMEL WHITE GLOSS
- 892.188 WURTH ENAMEL FLAT BLACK
- 892.177 WURTH ENAMEL SAFETY YELLOW
- 892.178 WURTH ENAMEL SAFETY BLUE
- 892.191 WURTH ENAMEL SAFETY RED
- 892.181 WURTH ENAMEL SAFETY ORANGE
- 892.192 WURTH ENAMEL GLOSS DARK GREY
- 892.179 WURTH ENAMEL GLOSS JD GREEN
- 892.180 WURTH ENAMEL ALUMINIUM
- 892.196 WURTH ENAMEL EQUIP YELLOW
- 892.190 WURTH ENAMEL FLAT WHITE
- 892.197 WURTH ENAMEL SCHOOLBUS YELLOW
- 892.195 WURTH ENAMEL SATIN BLACK
- 892.182 WURTH ENAMEL SAFETY GREEN
- 892.307 WURTH ENAMEL GLOSS LIGHT GREY
- 892.304 WURTH ENAMEL GLOSS JD YELLOW
- 892.305 WURTH ENAMEL INTERNATIONAL RED

Sandable 20 oz. Primer Aerosol

- 892.194 WURTH SANDABLE PRIMER GREY
- 892.193 WURTH SANDABLE PRIMER RED OXIDE

Spray Paint 16 oz. Aerosol

- 892.1871 WURTH ENAMEL GLOSS BLACK
- 892.1881 WURTH ENAMEL FLAT BLACK
- 892.1891 WURTH ENAMEL GLOSS WHITE
- 892.1901 WURTH ENAMEL FLAT WHITE
- 892.1921 WURTH ENAMEL GLOSS GREY
- 892.1951 WURTH ENAMEL SATIN BLACK
- 892.1941 WURTH ENAMEL PRIMER GREY

Engine Enamel 16 oz. Aerosol

- 892.172 WURTH ENGINE ENAMEL FRD BLUE
- 892.173 WURTH ENGINE ENAMEL ALP GREEN
- 892.171 WURTH ENGINE ENAMEL CUMM BEIGE
- 892.201 WURTH ENGINE ENAMEL GM BLUE
- 892.203 WURTH ENGINE ENAMEL CHVY ORANGE
- 892.174 WURTH ENGINE ENAMEL GLOSS BLACK
- 892.175 WURTH ENGINE ENAMEL GLOSS GREY

Brake Caliper 16 oz. Aerosol

- 892.501 WURTH BRAKE CALIPER GLOSS BLACK
- 892.502 WURTH BRAKE CALIPER GLOSS RED

High-Temp 20 oz. Aerosol

- 892.165 WURTH HIGH-TEMP BLACK
- 892.166 WURTH HIGH-TEMP ALUMINIUM

Hammer 20 oz. Aerosol

- 892.401 WURTH HAMMER BLACK
- 892.402 WURTH HAMMER SILVER

Dry Graphite 16 oz.

- 893.555 WURTH DRY GRAPHITE